

Follow this sheet to revisit a topic from year 5 maths. Complete as much as you feel confident doing.

## Warm up

### Flashback 4

Year 5 | Week 2 | Day 1



1) Use the diagram to work out  $15 \times 19$

×	10	5
10		
9		

2) Multiply 32 by 5

3) What is the perimeter of a rectangle that has length 8 cm and width 3 cm?

4) What is the value of 6 in the number 16,412?



## L.O: Multiply by 10, 100, 1000.

Multiplying by 10, 100 or 1000 does not require use of the bus stop method. Instead you need to use your knowledge of place value.

Remember the digits will move 1, 2 or 3 places to the left across the place value chart.

### ✕ Multiplying and Dividing by 10, 100 and 1000

10 000	1000	100	10	1	•	$\frac{1}{10}$	$\frac{1}{100}$	$\frac{1}{1000}$
					•			

#### Multiplying

X 10    digits move LEFT 1 space  
 X 100    digits move LEFT 2 spaces  
 X 1000    digits move LEFT 3 spaces



#### Dividing

÷ 10    digits move RIGHT 1 space  
 ÷ 100    digits move RIGHT 2 spaces  
 ÷ 1000    digits move RIGHT 3 spaces



1 Complete the multiplications.

a)

Th	H	T	O
			7

$7 \times 10$

b)

Th	H	T	O
		3	9

$39 \times 10$

c)

Th	H	T	O
	2	0	5

$205 \times 10$

d) What happens to the digits when you multiply by 10?

Copy and complete the questions into your exercise book.

2 Complete the multiplication sentences.

a)  $9 \times 10 = \square$

d)  $126 \times 10 = \square$

g)  $20 \times 10 = \square$

b)  $54 \times 10 = \square$

e)  $\square \times 10 = 320$

h)  $\square \times 10 = 5,000$

c)  $10 \times 13 = \square$

f)  $10 \times \square = 1,350$

3 Work out the multiplications.

a)  $45 \times 100$

c)  $41 \times 10$

$52 \times 100$

$41 \times 100$

$70 \times 100$

$41 \times 1,000$

b)  $612 \times 100$

d)  $10 \times 952$

$715 \times 100$

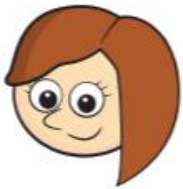
$100 \times 952$

$720 \times 100$

$1,000 \times 952$

4

$54 \times 1,000$   
 is the same as  
 $54 \times 10 \times 10 \times 10$



Is Rosie correct?

Explain how you know.