

Year 5 Home Learning

Date Wednesday 13th May

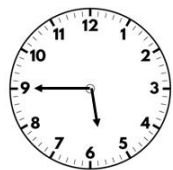
Follow this sheet to revisit a topic from year 5 maths. Complete as much as you feel confident doing.

Warm up

L.O: Calculate the area of rectangles.

Flashback 4

Year 5 | Week 5 | Day 3



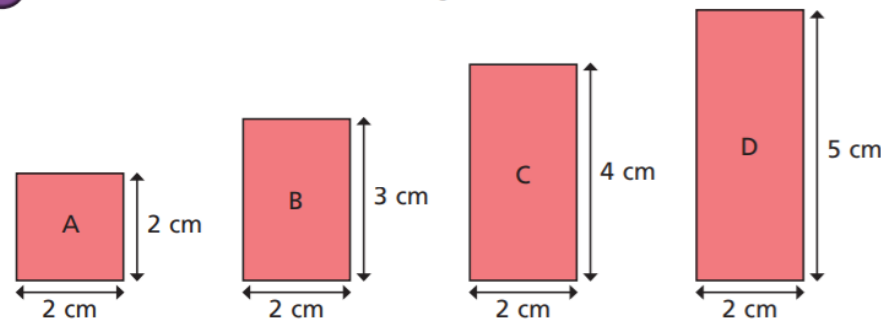
- 1) Which is greater, $1\frac{3}{4}$ or $1\frac{3}{7}$?
- 2) What fraction is missing? $\frac{9}{7}, \frac{7}{7}, \text{---}, \frac{3}{7}$
- 3) Multiply 56 by 32
- 4) Round 7.6 to the nearest whole number.

Area relates to the amount of space inside a shape.

To find the area of a rectangle you can either multiply the length by the width.

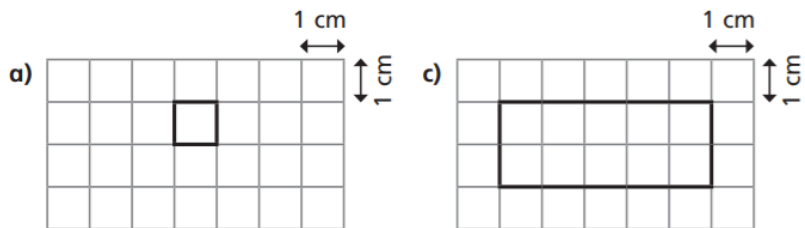
Sometimes you will be given the rectangle of squared paper. To calculate this area you simply need to count how many squares are inside the rectangle.

- 4 Calculate the area of the rectangles.



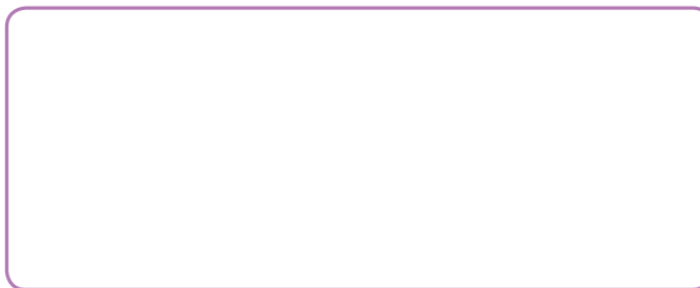
A = cm² B = cm² C = cm² D = cm²

- 1 On the grid, the area of each square is 1 cm². Calculate the area of each rectangle.



3

How many rectangles can you draw that have an area of 24 cm²? Label the lengths. Your drawings do not have to be exact.



- 2 Complete the sentences to describe the rectangle.

There are rows.

Each row has squares.

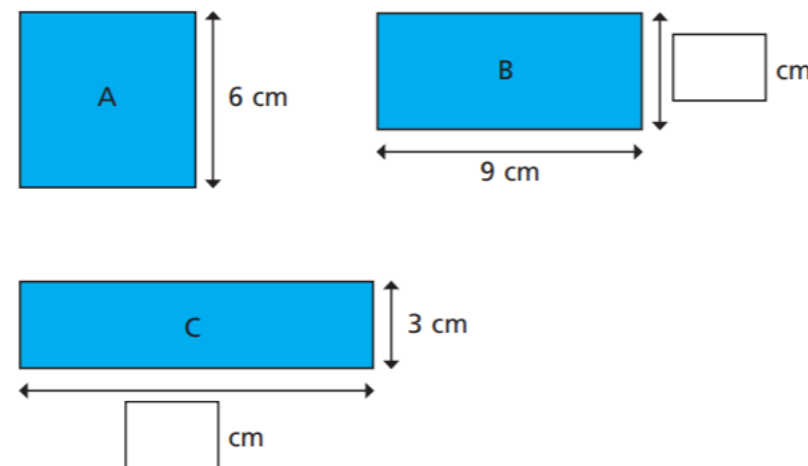
There are squares altogether.

× =



5

These shapes all have the same area. Shape A is a square. Work out the missing lengths.



To write a character description with illustration.

- Readers infer or deduce, a bit like a detective, information about a character. A reader can infer, or work out, what a character is like from their name, age, likes/dislikes, personality, appearance and interactions with others.
- Choose one of the characters from Macbeth. It will be easiest if you choose one that you answered questions for yesterday.
- Write a detailed paragraph describing your chosen character. Use the help below and the example on the next slide. Illustrate your paragraph with a picture of your character.

Verbs: How they walk or speak? (do they shuffle, stride, skip, grunt, cackle, drawl etc.)

Adverbs: How do they move or talk? (confidently, cautiously, talk quickly, croakily, lazily etc.)

Similes: Could you compare them to an animal? What could you compare their eyes/hair/smile etc. to?

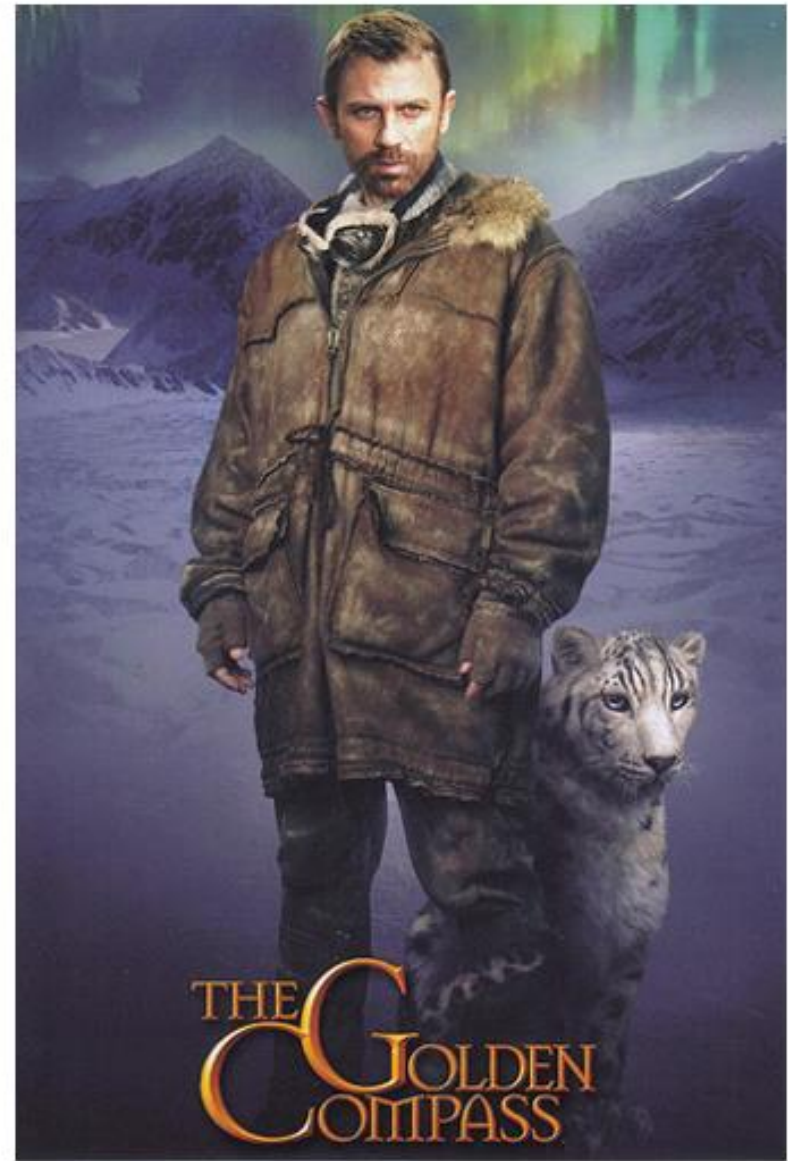
Metaphors: E.g. his hands were flat spiders; she had a heart of stone

What are their facial features like? (E.g. small, shifty eyes could indicate they're secretive; rotten teeth might suggest they neglect themselves)

What are they wearing? Style of clothes and colours? (E.g. brightly coloured clothes = confident)

Remember to show NOT tell.

Lord Asriel was a tall man with powerful shoulders, a fierce dark face, and eyes that seemed to flash and glitter with savage laughter. It was a face to be dominated by, or to fight: never a face to patronise or pity. All his movements were large and perfectly balanced, like those of a wild animal, and when he appeared in a room like this, he seemed a wild animal in a cage too small for it.



Other/Extra: Music

Continuation of yesterday's activity.