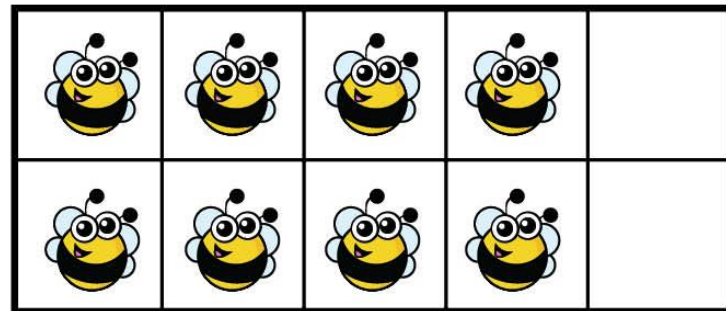
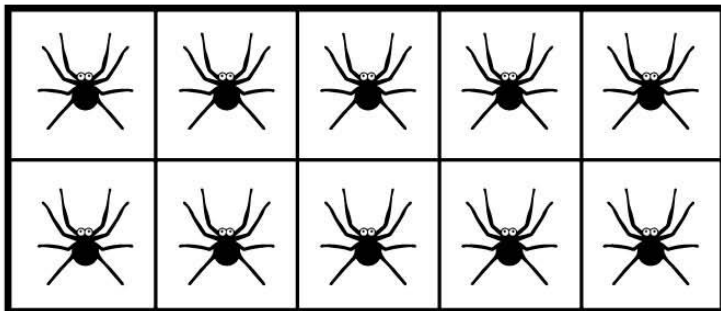
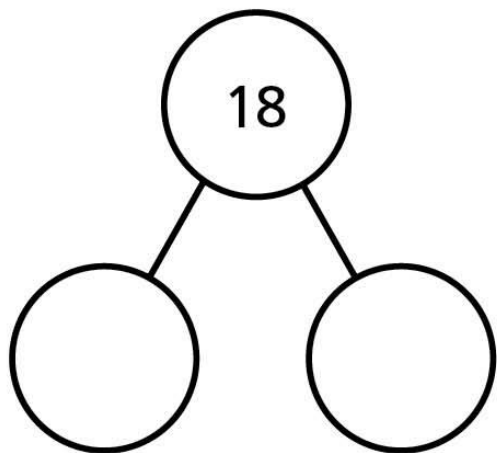


Related facts

1 Look at the picture.



I Complete the part-whole model and fact family.



$$\square + \square = 18$$

$$\square + \square = 18$$

$$18 - \square = \square$$

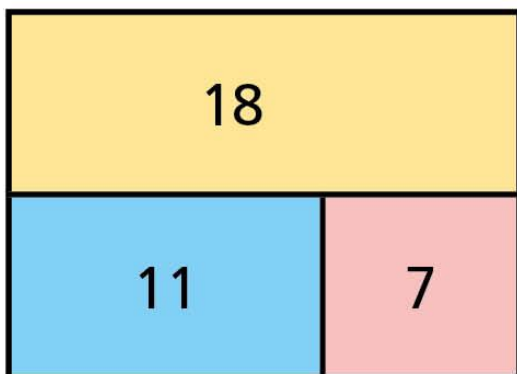
$$18 - \square = \square$$

Can you write each number sentence a different way?



2 Complete the fact family for each bar model.

a)



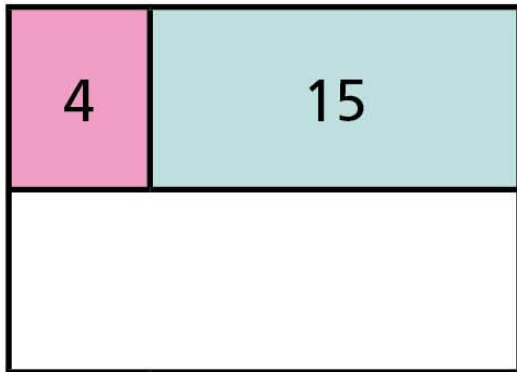
$$\square + \square = \square$$

$$\square + \square = \square$$

$$\square - \square = \square$$

$$\square - \square = \square$$

2 b)



$$\square = \square + \square$$

$$\square = \square + \square$$

$$\square = \square - \square$$

$$\square = \square - \square$$

2 c) Draw your own bar models.

Ask a partner to write the fact family to match.

