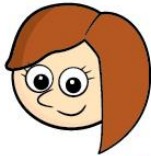


## Order groups of objects

1 Show how many cherries each child has.



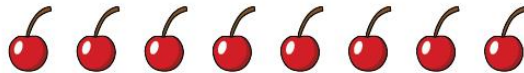
Teddy



Rosie



Dora



- I** a) Who has the most cherries? \_\_\_\_\_
- b) Who has the least cherries? \_\_\_\_\_
- c) Whitney has more cherries than Dora, but fewer cherries than Teddy.

Draw Whitney's cherries.





**2** a) Draw counters to show each number.

13



17



14



- 2** b) Write the numbers in order.

Start with the smallest number.

--	--	--

- c) Write the numbers in order.

Start with the greatest number.

--	--	--

What do you notice?

