

# Interesting facts

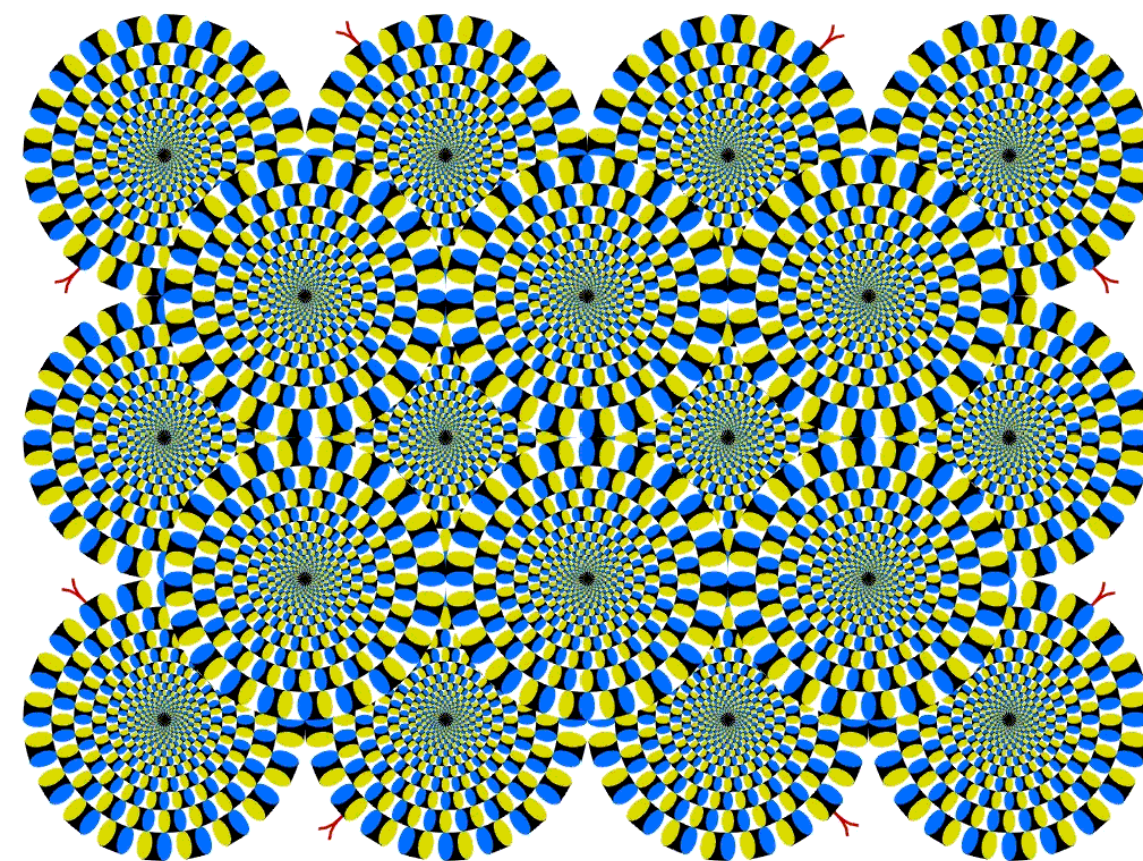
---

- ❑ The average adult blinks at a rate of 10 to 20 times per minute. With an average of 4,200,000 blinks a year.
  - ❑ It is impossible to sneeze with your eyes open.
  - ❑ A fingerprint has 40 different unique characteristics an iris has 256, hence the growing use of iris scans for security purposes.
-

# Optical illusions

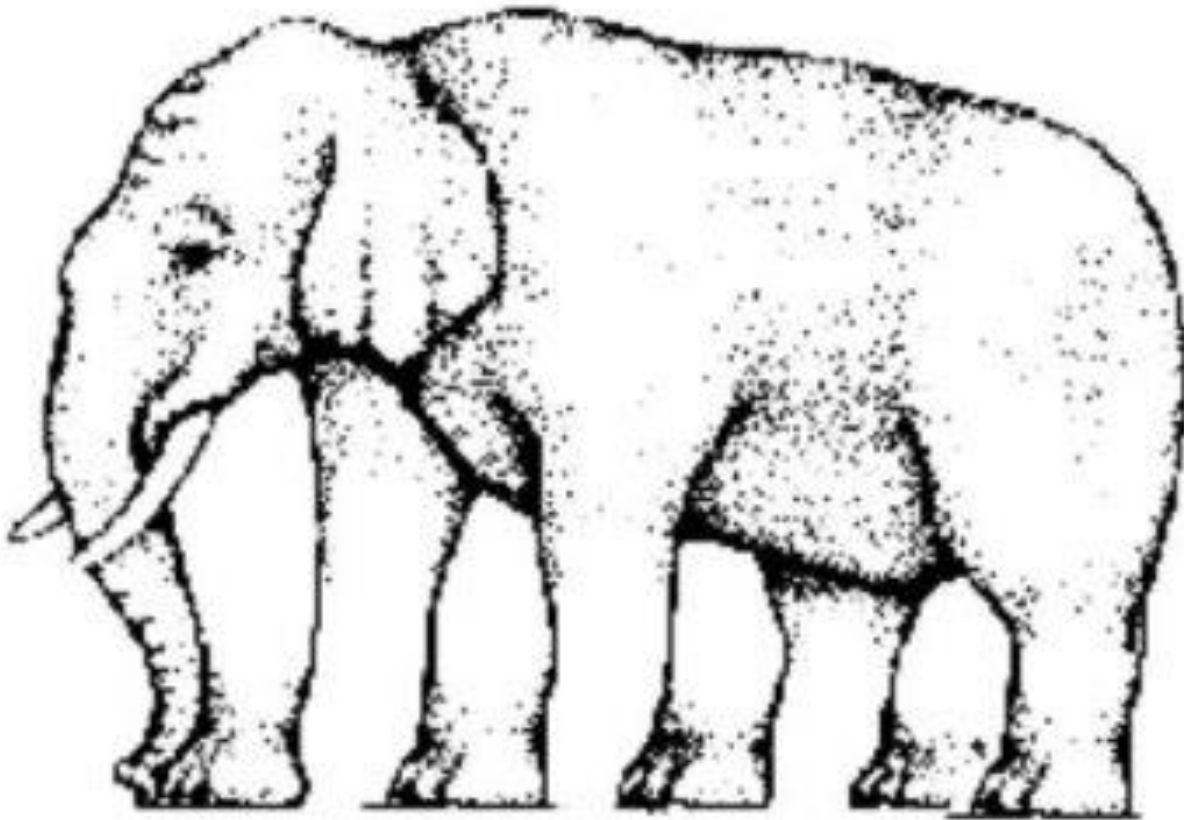
what do you see?

---



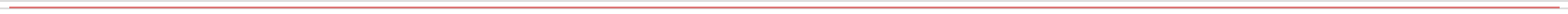
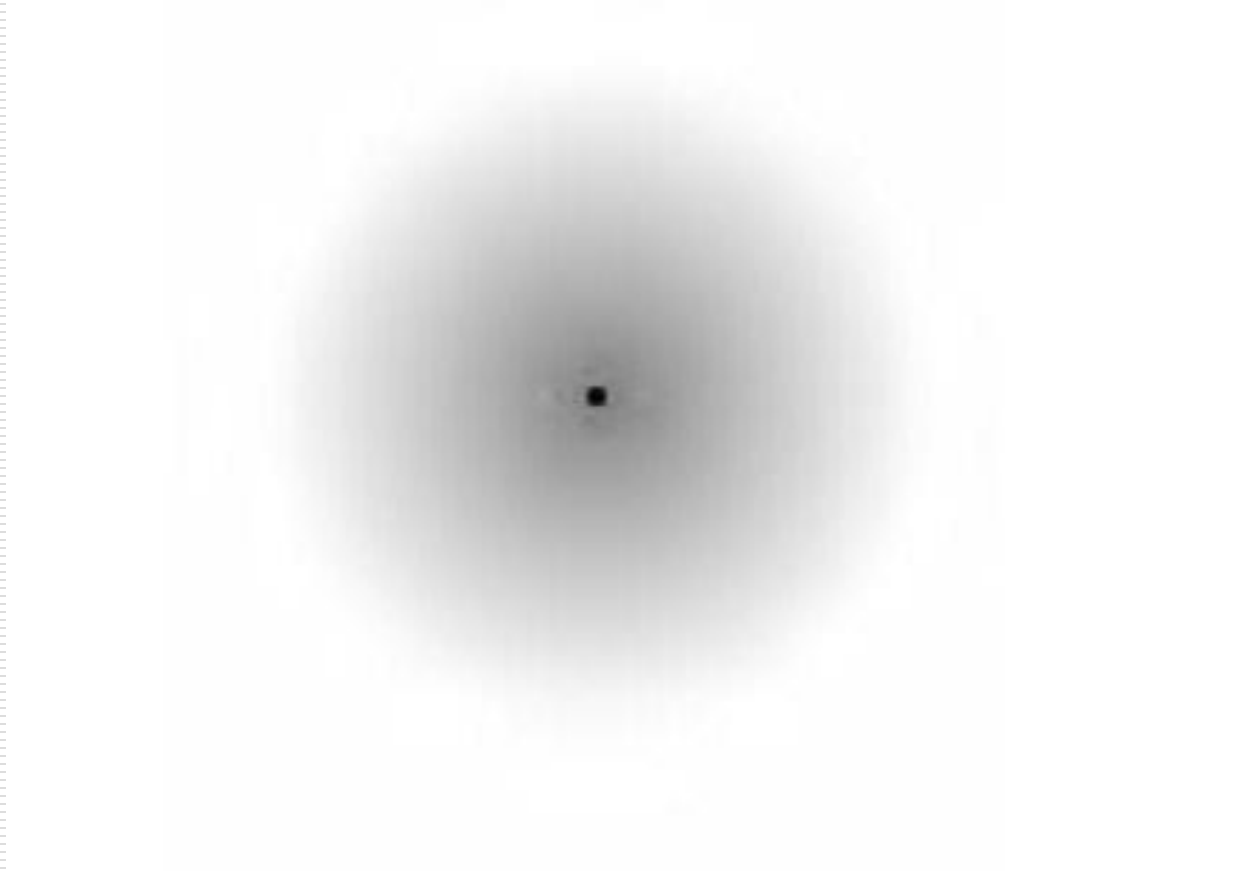
How many legs does this elephant have?

---



Stare at the black dot...  
after a while, the gray haze around it will appear to  
shrink.

---



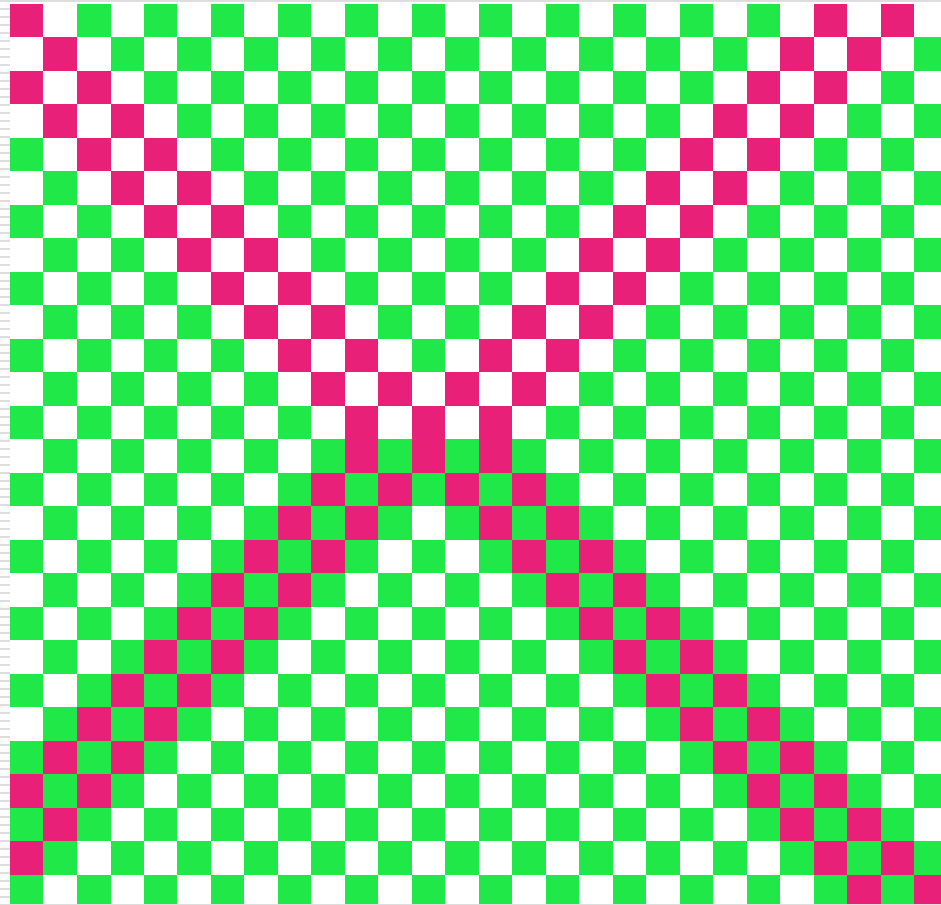
# What do you see?

---



Do you think the pink dots are the same colour?

---



---

How do are eyelids, eyelashes, eyebrows and tears  
protect our eyes?

---

---

The little dark circle in the centre of each eye lets light in. It is called the pupil.

If you were in a dark place where there was no light at all, would you be able to see?

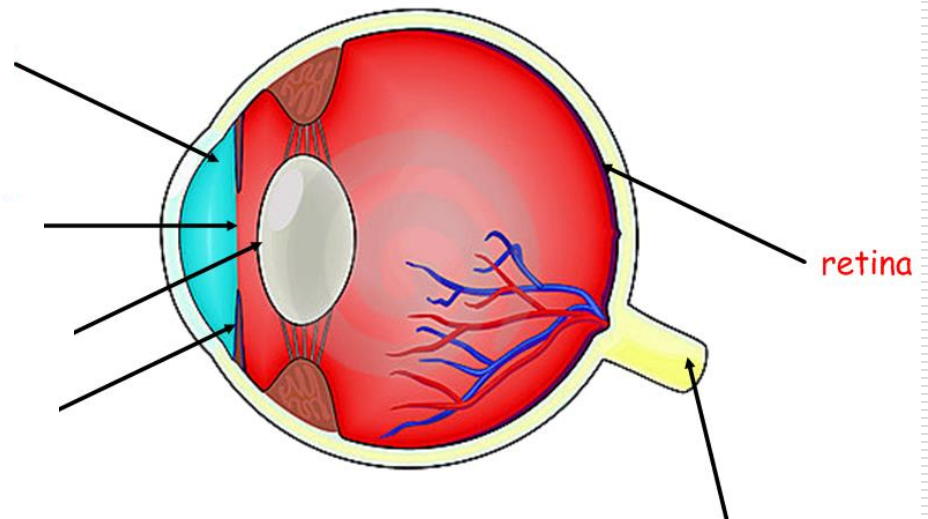
---



---

When light goes into our eyes it hits the back of the eye, a part that is very sensitive to light.

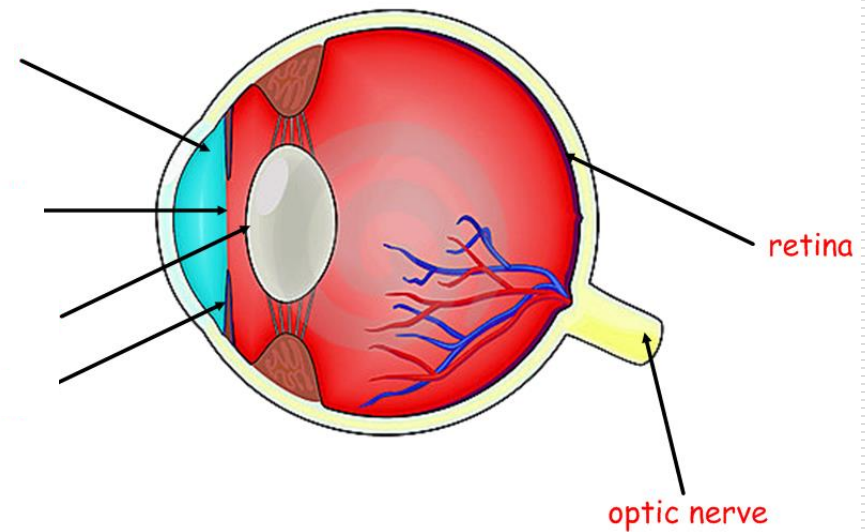
This part is called the **retina**.



---

When light touches the **retina** it makes an upside down picture of what you are looking at.

A nerve called the **optic nerve** carries the image to your brain which turns it the right way round



The actual image



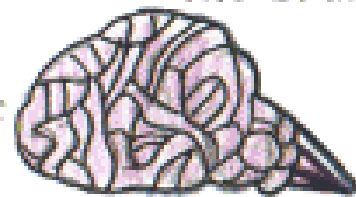
the eye



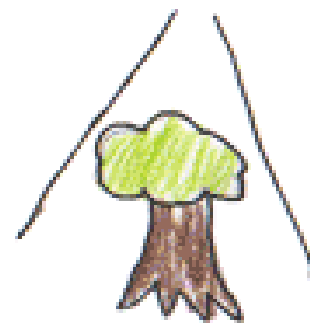
What your eye sees



the brain



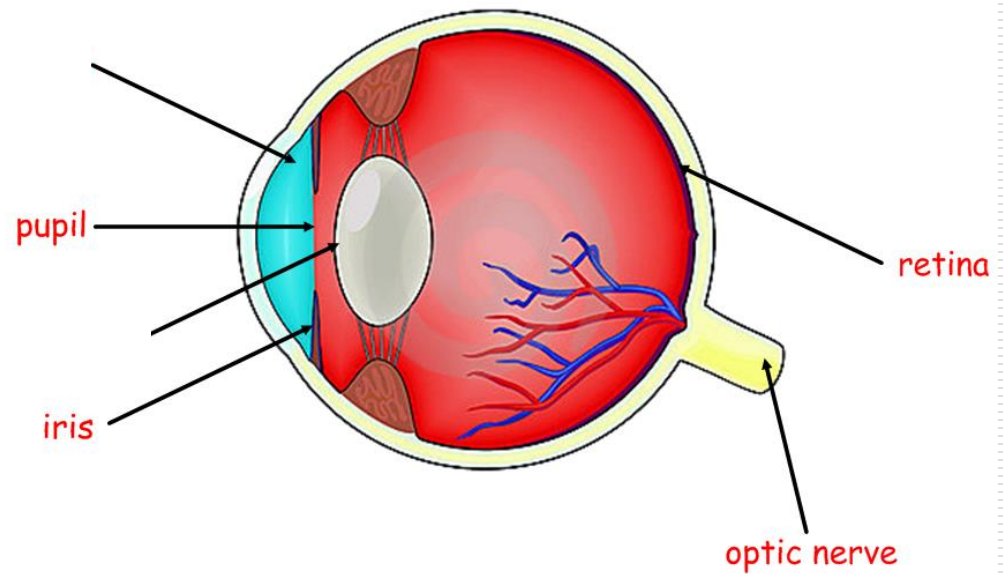
the final image



---

Your **iris** is a ring of muscle that changes the size of your **pupil**, depending on how much light needs to be let in.

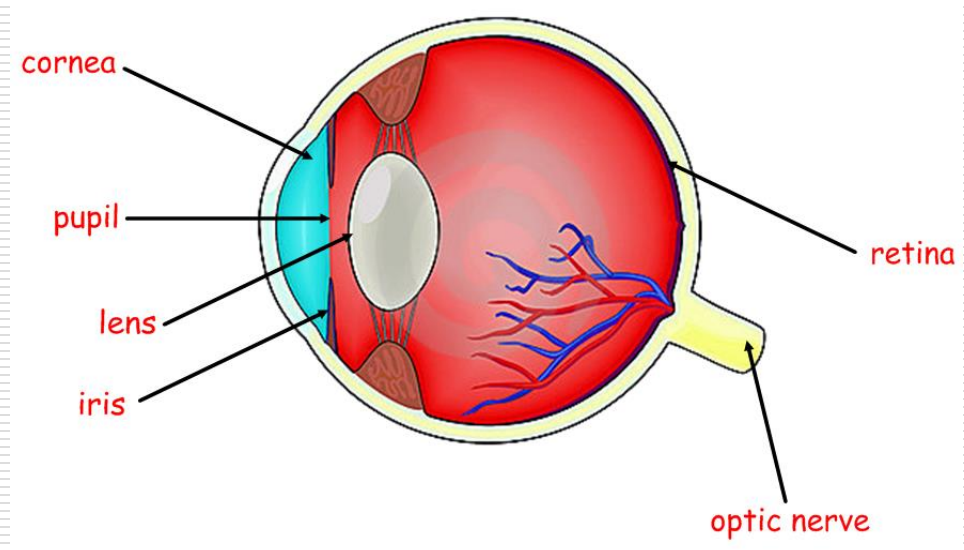
Your **pupil** widens in dim light and is smaller in bright light.



---

The **lens** is transparent, it changes shape for you to see near and far.

The **cornea** helps your eye to focus as light comes through.



# The Human Eye

---

