

NEWPORT JUNIORS PUPIL SURVEY

As well as asking parents views we also wanted to hear from pupils. The children were asked a similar set of questions and below is a unique insight into their school journey...

WHAT DO YOU LIKE AND DISLIKE ABOUT YOUR SCHOOL JOURNEY?

I like talking to my parents about my day.
I like scooting because its fast!
I don't like the noise and traffic fumes.

I feel energised walking.
I don't like getting stuck in traffic. Its hot in the car.

I like seeing my friends and getting fresh air.
I don't like it when it rains and gets cold.

I like the responsibility of walking on my own.
Sometimes my brothers and sisters annoy me!

I like looking at the scenery and the high street.
The roads are so busy, too much traffic.



HOW WOULD YOU LIKE TO TRAVEL TO SCHOOL?

In the Car

Walk to school

Scooter or ride my bike

Car and then walk the rest of the way



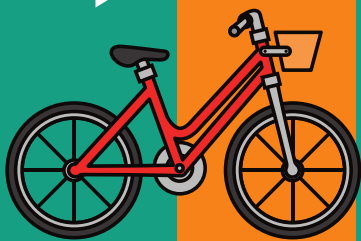
Listening to music and bring my dog

WHAT WOULD MAKE THE JOURNEY MORE FUN?

Playing games or a scavenger hunt and a snack on the way

Walking with friends.
Cycle lanes

Competitions to win prizes or a treat if you bike or walk or get exercise



No - lots of traffic and cars don't always see you

DO YOU FEEL SAFE TRAVELING TO SCHOOL? IF NOT - WHY?

Big groups of older children

Worried about cars and crossing the road

Sometimes cars are speeding and going too fast



Cycle lanes so we can ride our bikes safely

HOW CAN WE MAKE IT SAFER OUTSIDE SCHOOL?

Front gate worked better

Zebra crossings and speed bumps

A one-way system and wider pavements

