

# Year 6 2024/25 Autumn Term Curriculum Overview

## Computing

### Spreadsheets

- Excel software

### Networks

- communication online

### E-Safety

Finding media balance  
clickbait

## SMSC / Global Links

- House Captain voting
- Armistice Day
- Jeans for Genes
- European Day of Languages
- National Poetry Day
- Harvest
- Black History Week
- Children in Need
- Courageous Advocate – Martin Luther King.
- Christmas
- Anti-bullying week
- Bike to School Week
- Rugby World Cup

## PE

Tag Rugby  
Swimming  
Dance  
Gymnastics

## MFL- French

Autumn 1 =  
Everyday life  
Subject  
Autumn 2 =  
where I live

## Music

- Children will be focussing upon reading and composing music.

## Reading

- Letters from the lighthouse by Emma Carroll.

## Science

- Classification
- Light

## Design and Technology

- Shelters design, manufacture and evaluate

## Maths

- Place value to 1,000,000
- Mental and written addition and subtraction
- Mental and written multiplication and division
  - Statistics
  - Assessment Skills
- Times Table Rock Stars

## PSHE

- Being Me in My World
- Celebrating Differences

## Art

Autumn 1 - Clarice Cliff  
Autumn 2 – Landscape

## Wellbeing

- Children will take part in wellbeing activities.
- Children will be taking part in activities, discussions and experiences to support mental health in our new classes:
  - Building positive relationships
  - Managing feelings and behaviours
  - Supporting physical health
- World Mental Health Day in October.

## Geography:

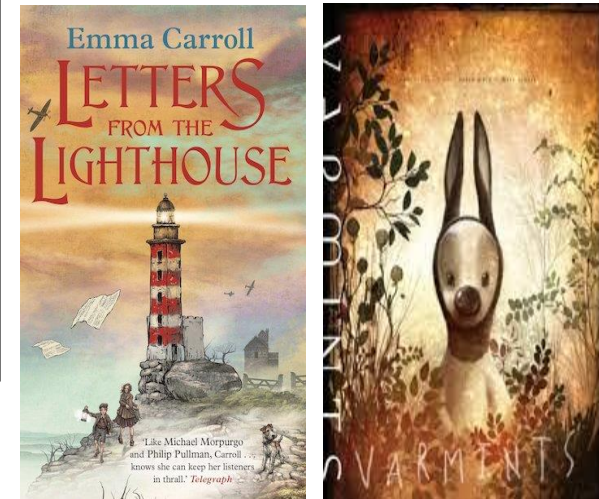
Mountains:  
Mountain ranges  
Mountain environments  
Mountain tourism

## English

- Book 1: Varmints: Environmental Change Narrative
- Book 2: Hansel & Gretl: Dual Narrative & Persuasive Letter Writing
  - Letters from the Lighthouse – Mixed Genres.
    - Celebrating Roald Dahl Week – Poetry.
  - We will also be focussing heavily on handwriting following the schools new programme, Letter-join

## Forest Fun @ Beech's Base

Staff will be leading the children in making wooden shelters, as well as other forest activities supporting their wellbeing.



## Beliefs and Values

Exploring Worldviews from inspiration people.

## History:

Not this term